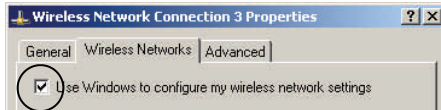


RIVERPOINT WIRELESS BASIC—RP

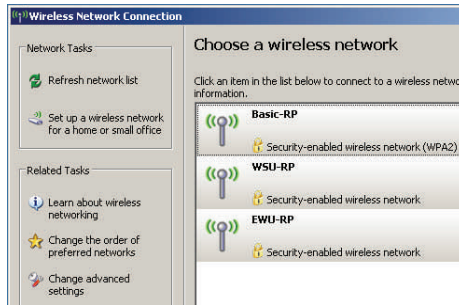
Before you begin, you should download and install the **latest drivers for your wireless adapter**.

1. Give Windows control of wireless:

- Open the Control Panel, click Administrative Tools, and click Services.
- Scroll down to Wireless Zero Config and open.
- Click **Start** if possible; otherwise ignore.
- Return to the Control Panel, and click Network Connections.
- **Right-click** Wireless Network Connection.
- Click **Properties**, and click the **Wireless Networks** tab.
- Make sure **Use Windows to configure my wireless network settings** is checked.



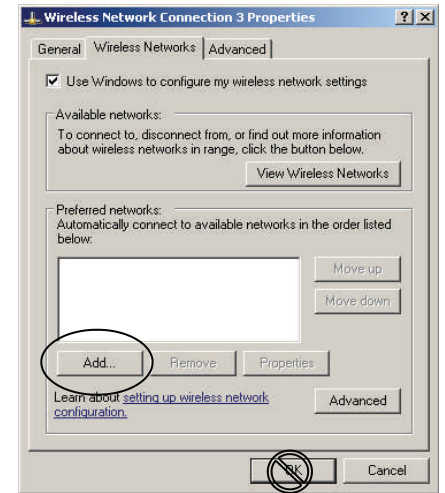
- Click **OK**, and **right-click** Wireless Network Connection.
- Click **View Wireless Networks**.



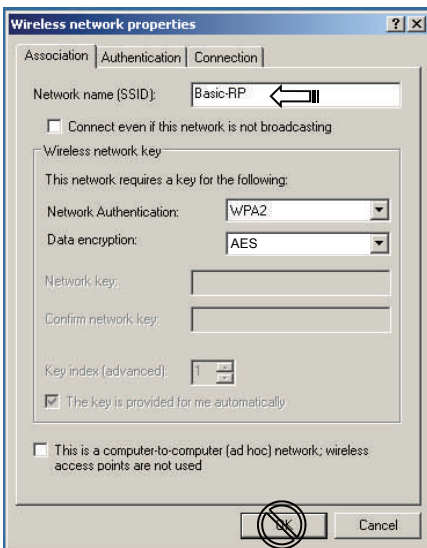
If your window appears as above, click **Change Advanced Settings**.

Note: If 'Basic-RP' does not appear, be sure you are in range of an access point, previous steps were completed properly, and your wireless adapter is enabled.

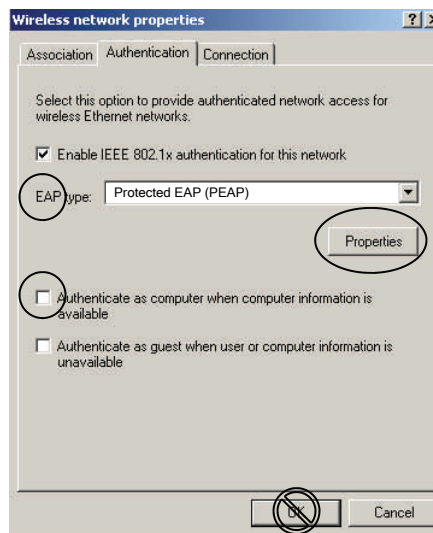
2. Click the **Wireless Networks** tab, and click **Add (not OK)**.



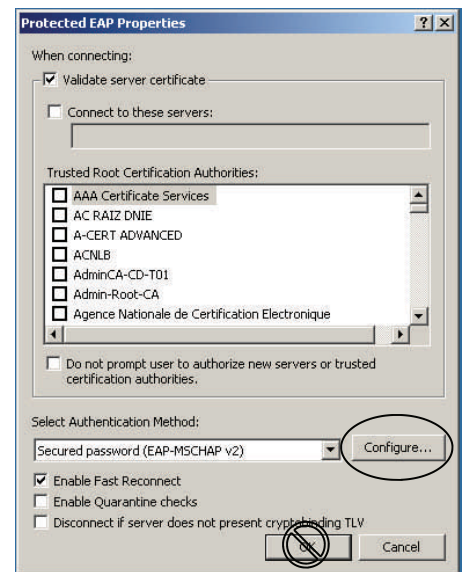
3. Type Basic-RP (case-sensitive), then click the **Authentication** tab (not OK).



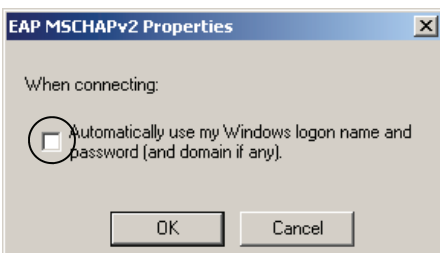
4. Fill-in the window as indicated below, then click **Properties (not OK)**.



5. Click **Configure (not OK)**.



6. Uncheck the box.



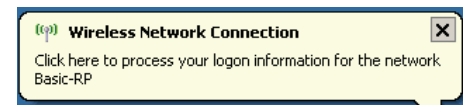
Now click **OK** four times for each of the four windows as you apply changes and back out of the settings. The following prompt appears in the lower right corner of the screen:



7. Click the prompt, and enter your network-id (for User name) and password in the window that appears. **Ignore the Logon domain field**. Click **OK**.



8. If authentication succeeds, the following information box appears in the task bar:



If authentication fails, however, the login window will persist. This may be a case of a forgotten password.

9. Click the prompt, and click **OK** on the Validate Server Certificate window that appears.

Congratulations! You are now connected as indicated by the following information box:

