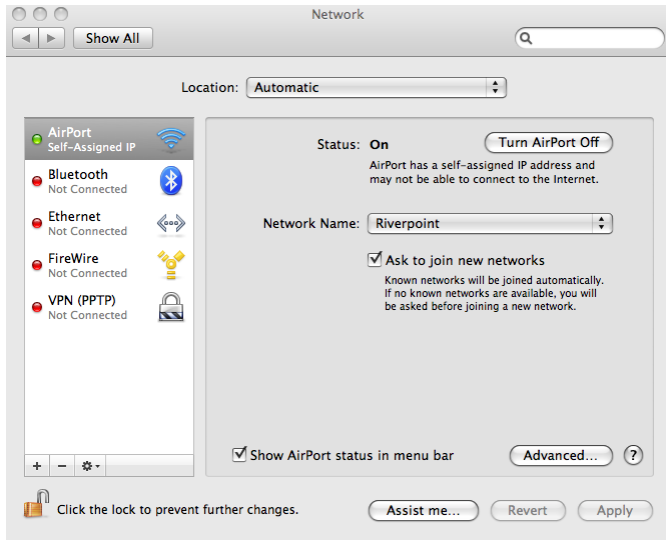


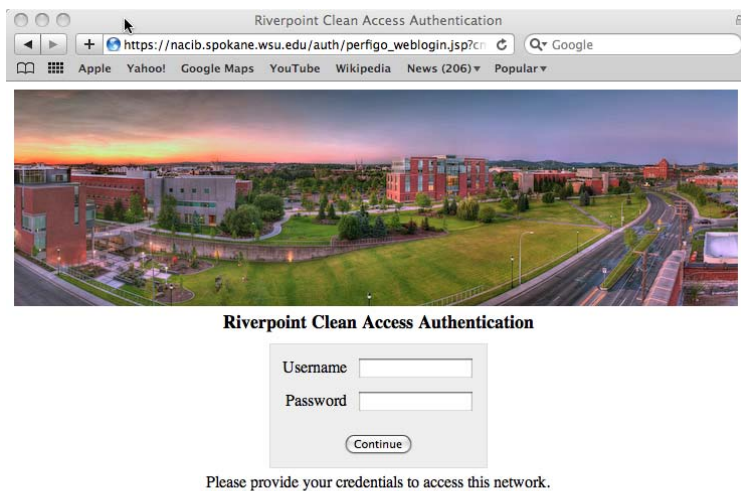
## Connecting Macintosh to the Riverpoint Wireless Network

This document explains how to connect a Macintosh computer to the wireless network at the WSU-Spokane campus.

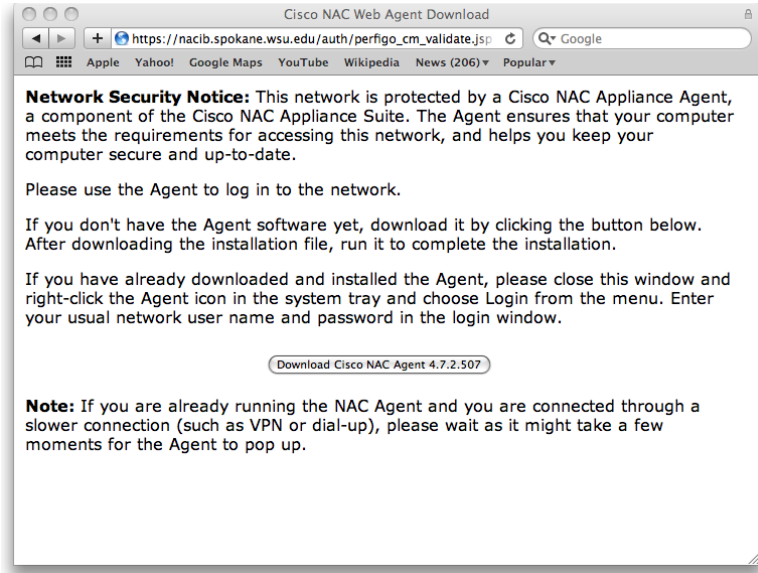
1. Click the AirPort icon , and click Turn AirPort On from the drop-down menu that appears.
2. Click the AirPort icon again, and click Open Network Preferences. The Network dialog box appears.



3. Click Riverpoint in the Network Name drop-down list, and click Advanced. Highlight Riverpoint and WPA-2 Enterprise in the Preferred Networks list, and click OK.
4. Close the Network dialog box. Save changes if you are asked.
5. Open a browser window. The Riverpoint Clean Access Authentication screen appears.



6. Type your username and password, and click Continue. The Cisco NAC Security screen appears.



7. Click Download Cisco NAC Agent to download the agent.
8. Right-click the NAC Agent icon, click login, and type your user name and password. You are now connected to the Internet.