

Connecting Windows 7 to the Riverpoint Wireless Network

This document explains how to connect Windows 7 to the wireless network at the WSU-Spokane campus.

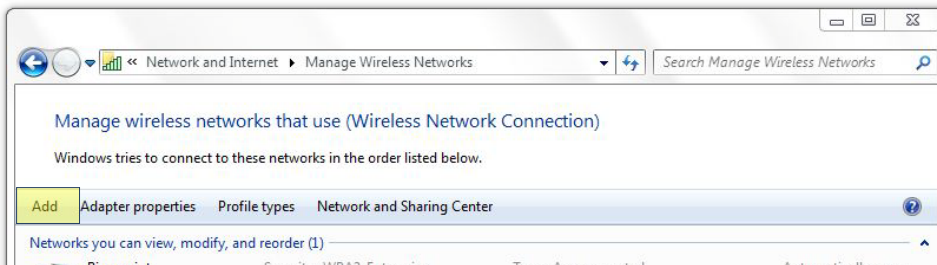
1. Click the wireless icon  on your desktop. A list of available wireless networks appears.



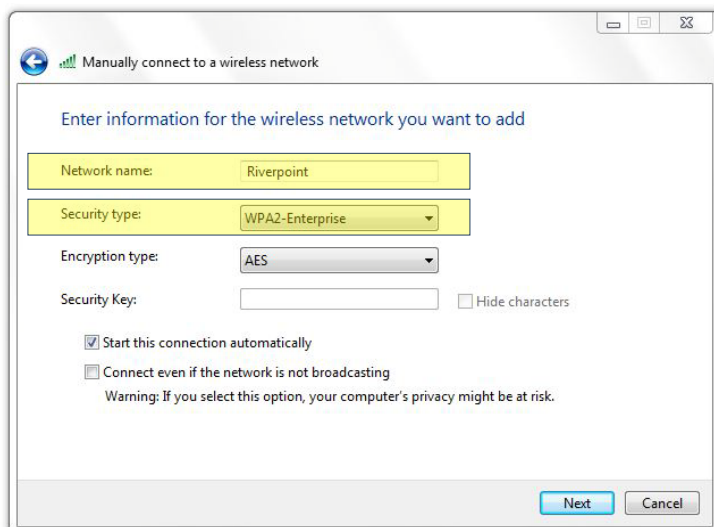
2. Click Riverpoint, click Connect, and enter your user name and password in the Windows Security dialog box that appears. You are now connected to the Internet.

Note: If the Windows Security Alert error message appears. Click Terminate, click Cancel in the Windows Security screen when it reappears, click Cancel in the Connect to a Network screen, and continue with step 3.

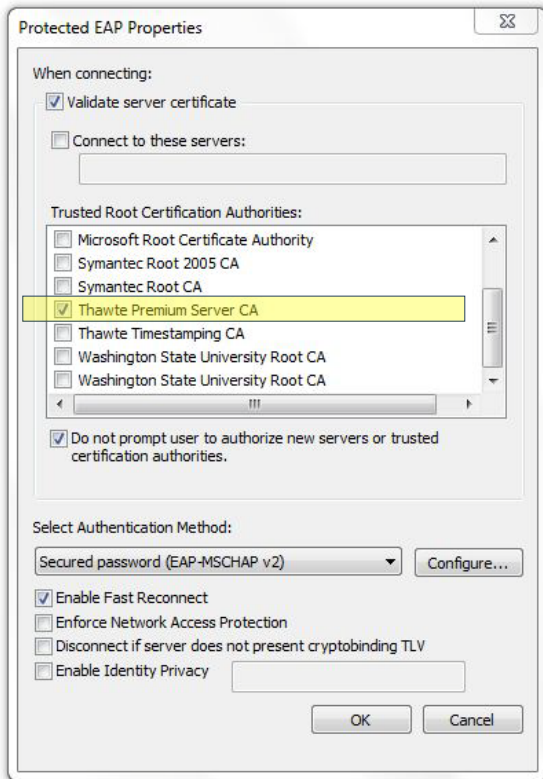
3. Click the wireless icon, click Open Network and Sharing Center, and click Manage wireless networks. The Manage Wireless Networks dialog box appears.



4. Click Add, and click Manually create a network profile. The Manually connect to a wireless network screen appears.



5. Type Riverpoint in the Network name dialog box, and click WPA2-Enterprise in the Security type drop-down menu, and click Next. A dialog box appears stating that you have successfully added Riverpoint.
6. Click Change connection settings. The Riverpoint Wireless Network Properties dialog box appears.
7. Click the Security tab, and click Settings. The Protected EAP Properties dialog box appears.



8. Check the Thawte Premium Server CA box, and click Configure.
9. Be sure the Automatically use my Windows logon name . . . box is not checked, and click OK.



10. Click OK or Close to each box that appears, and then close the Manage Wireless Networks window.
11. Click the Additional information is needed . . . dialog box.
12. Enter your log in information, and click OK. You are now connected to the Internet.