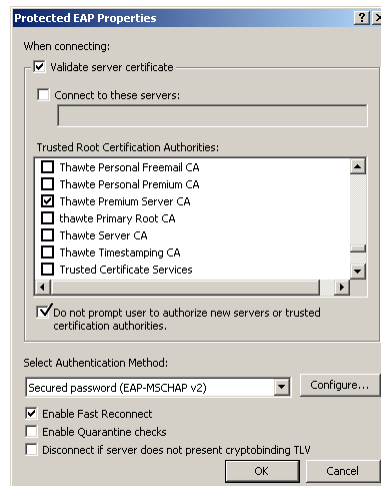
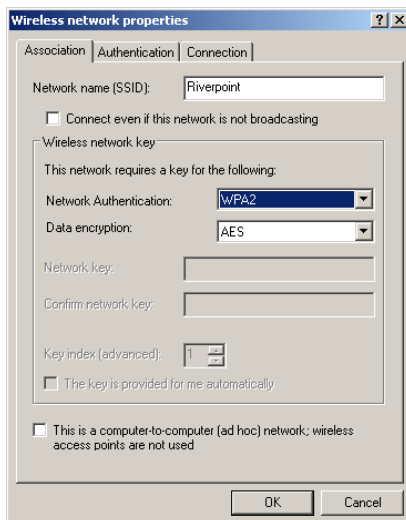
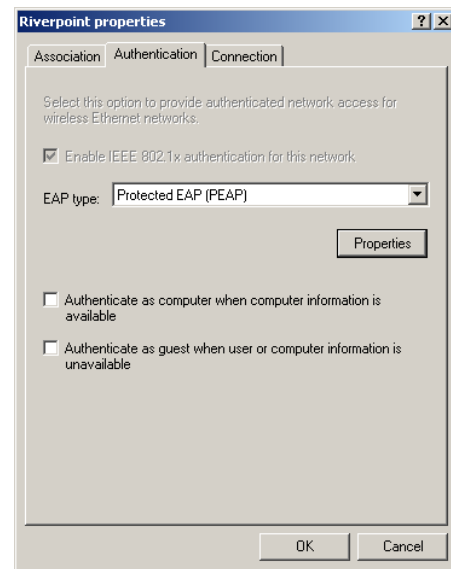


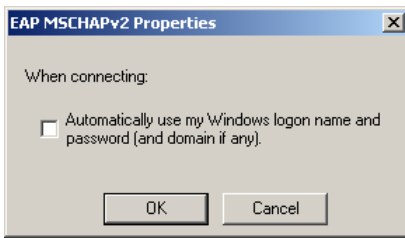
# Connecting Windows XP to the Riverpoint Wireless Network

To connect an XP computer to the Riverpoint wireless network, you must first authenticate the computer and then connect through Clean Access. This document explains each of these processes.

1. Give Windows control of wireless:
  - a. Go to Control Panel, and click Administrative Tools from the Services menu.
  - b. Click Wireless Zero Configuration, and click Start if available; otherwise, return to Control Panel, and click Network Connections.
  - c. Right-click Wireless Network Connection, and click Properties.
  - d. Click the Wireless Networks tab, verify that the Use windows to configure my wireless network settings box is checked, and click OK.
  - e. Right-click Wireless Network Connection, and click View Available Wireless Networks. The Wireless Network Connection window appears.
2. Click Change Advanced Settings, and click Add in the Wireless Networks tab.
3. Double-click Riverpoint, and make the following changes to the Wireless Network Connection window that appears. Click the Authentication tab when you are finished.
  - a. Type Riverpoint in the Network name (SSID) box.
  - b. Choose WPA2 from the Network Authentication drop-down list.
  - c. Be sure AES is selected in the Data encryption box.
4. Make the following changes in the Authentication tab, and click Properties:
  - a. Choose Protected EAP (PEAP) from the EAP type drop-down list.
  - b. Be sure the Authenticate as computer when computer information is available check box is not checked, and click Properties.
5. Make the following changes, and click Configure:
  - a. Click Thawte Premium Server CA in the Trusted Root Certification Authorities.
  - b. Click the Do not prompt user . . . check box.
  - c. Be sure the Enable Fast Reconnect box is checked.



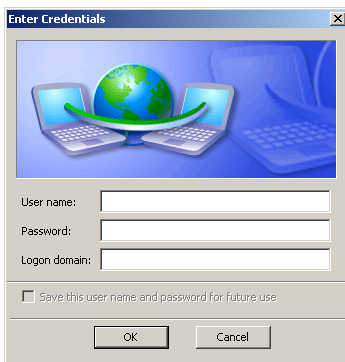
The EAP MSCHAPv2 Properties dialog box appears.



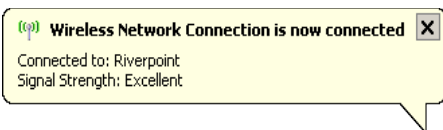
2. Uncheck the Automatically use my Windows logon . . . check box, and click OK.
3. Click OK in each of the windows that appear. The Wireless Network Connection balloon appears.



4. Click the balloon, enter your user name and password in the Enter Credentials dialog box that appears, and click OK.



If you have successfully achieved authentication, the Wireless Network Connection is now connected balloon appears.



**NOTE:** If authentication fails, the Enter Credentials dialog box will persist. Be sure you have followed these steps correctly. Any persistent failure will be up to you to resolve.

6. Open a browser window. The Riverpoint Clean Access Authentication screen appears.



7. Enter your user name and password, and click Continue. The Network Security Notice screen appears. Read the information presented, click Launch Cisco NAC Windows Agent, and click Run when the security warning appears. The Cisco NAC Agent dialog box appears.
8. Enter your user name and password, and click Log In. Click OK in the dialog box that appears telling you that you have full network access. The Cisco NAC Agent icon appears in your system tray.



Congratulations! You are now connected to the wireless network.

**NOTE:** The Clean Access Agent, which is used to connect to the wireless network, will automatically appear from now on whenever you are within range of the Riverpoint wireless network.